

Dear Parents/Carers

We demonstrate our Values of *Trust, Respect, Honesty, Kindness, Friendship and Generosity* at Prees C.E. Primary School and Nursery in all that we strive to achieve each day.

Monday 15th September	PE - Year 3, Year 5 and Year 6
Tuesday 16th September	PE - Nursery, Reception and Year 1
Wednesday 17th September	Swimming Year 2, 5 and 6 PE - Year 1 and Year 3
Thursday 18th September	PE—Years 2 and 4
Friday 19th September	PE - Reception and Year 4

Please can children come to school in their PE kit on PE days and bring a spare pair of socks to change into as the grass can be wet. Thank you.

Meet the Teacher

On Monday 22nd September, there is an opportunity to come into school and meet your child's class teacher.

The teachers will be in their classrooms from 3.30 p.m. until 4.30 p.m. so please come along and say hello.

There is no need to notify us of your attendance.

Reading

As ever we really appreciate your support in your child's reading development. We understand that it is difficult to hear your child read every day, but if you could try to build in at least three reading at home sessions during the course of the week to hear your child



or to talk with them about their reading that would be really

beneficial. Reading books will be sent home with your child's reading record diary.

Please record every time you hear your child read. We ask your child brings their reading book and reading record diary into school each day. Thank you.

Parking

We have two disabled parking bays outside of school—it is really important please that these spaces are left clear for people with a blue badge who need to park there. We would really appreciate your support with this.

Parking around the Memorial

The Parish Council have installed 'No Parking' signs around the memorial which they are requesting that everyone adheres to. Access to the neighbouring properties is being blocked on a regular basis which resulted in a delay for fire engines recently when trying to put out a fire. Everyone's co-operation is very much appreciated.

Harvest Service

Our Harvest Service is on Monday 6th October at 2.00 p.m. at St Chad's Church – everyone is welcome to attend. We will be asking for donations of non perishable food e.g. tins and packets to donate to the Whitchurch Food bank. There will be a collection box in school, so please send any items you wish to donate into school by Friday 3rd October.

During the service, there will be a voluntary collection, donations will be sent to the Farm Crisis Network.

Thank you for your support.

Whitchurch Food Bank

- JARS OF COFFEE (LARGE AND SMALL)
- TINS OF CUSTARD
- TINS OF FRUIT
- JARS OF JAM
- SPONGE PUDDINGS
- POT NOODLES
- LONG-LIFE FRUIT JUICE
- SEMI-SKIMMED OR WHOLE LONG-LIFE MILK
- TINS OF CARROTS
- PORRIDGE
- RICE PUDDING
- TEA
- WASHING-UP LIQUID
- BOILED RICE 500 GRAMS AND 1KG PACKETS
- CHOCOLATE SNACK BARS
- CHOCOLATE AND SWEETS
- JARS OF PASTA SAUCE
- TINNED HAM
- WASHING POWDER/LIQUID
- SHOWER GEL
- LADIES DEODORANT

As our food stocks are considerably reduced across the whole range of foods, any canned or packaged foods would be welcome

Child Absence

Please telephone school (01948 840209) by 9.30am if your child is unwell and will not be attending that day. If leaving a message, can you please provide the exact reason why your child is absent. If we have not heard from you by 9.30am we will text you and then follow-up with a telephone call if we have still not heard from you by lunchtime.

We shall also be contacting parents of Nursery children who do not attend, for whatever reason, on days that we are expecting them. This is a health and wellbeing safeguarding check.

Stay, Play and Chat

Prees C.E. Primary School & Nursery
every Wednesday 9.00am - 10.30am (during term time)

Children from 0-5 years, parents, carers, grandparents, friends; we look forward to you joining us on a Wednesday in our school hall
Sessions are free.

Breakfast Club and Wrap Around Club

We have a daily Breakfast Club (during term time) from 8am. Breakfast is supplied and the children are taken to join their classes at 8.35am. The cost for the daily session is £4 payable via ParentPay. If you are able, we ask that you book in advance but the club is also available on an ad hoc basis to suit your needs.

Wrap Around Club (during term time) runs from 3.15pm—6pm daily. The cost is £4 per hourly session, payable via ParentPay. A snack can be provided if your child is staying after 5.10pm for an additional cost of £1, you need to let us know in advance if you would like this please.

Again, if you are able, we ask you to book in advance but the club is also available on an ad hoc basis to suit your needs.

Both clubs are for children aged 3 years and above. Vouchers can be used to pay for Breakfast and/or Wrap Around Club.

Thank you.

School Meals

Hot school meals are available daily at a cost of £2.55 (£1.85 for Nursery children) and payable via ParentPay.

Please note children in Year 3 need to pay for school lunches.

Your child may be entitled to free school meals if you are in receipt of certain benefits.

Please visit the site below to check if you are eligible to apply.

<https://www.gov.uk/apply-free-school-meals>

Thank you.

Toast

Toast is available to the children at first playtime at a cost of 10p per slice, this is payable via ParentPay.

Children in Nursery, Reception and Key Stage 1 have free fruit on a daily basis.

**** Please let us know if you do not want your child to have toast on a daily basis as some of our children may not understand and may order without you knowing. ****

Children are more than welcome to bring in their own healthy snacks, i.e. raw vegetables, fruit etc. to eat at playtime. Thank you.

**** School Transport ****

Your child may be eligible for school transport if they are in Reception Class to Year 6 and fulfil certain criteria.

Applications can be submitted online at <https://www.shropshire.gov.uk/school-transport/available-support/>

Scroll down and click on Primary.

Any queries please contact the school office. Thank you.

Homework

Your child's homework is accessed via our online Seesaw program.

Homework is set on Seesaw each week. If your child is just starting our school you will receive login details during their first week.

If you have not previously accessed Seesaw or mislaid your child's login details Please contact the school office. Thank you.

Wellies

If your child does not already have a pair of wellies in school (labelled with their name please) can we ask that you send a pair in that can be left in school.



We play outside at lunchtimes on the field as often as possible, and they will then also be available for use when they are taking part in Outdoor Learning.

Thank you.

Water Bottles

Please can children bring a water bottle, labelled with their name to school each day.

If your child is bringing juice to drink with their lunch can they also bring a bottle with water in so that they can remain hydrated throughout the day.



Thank you.



Are you a parent carer or a young person with special needs or learning differences (with or without a diagnosis)?

Here's where you can join us: Natter Matters sessions and family events

Natter Matters

Monday 8th September, 9.30am-11.30am Wem Town Hall

Stories and Crafts - Stories told by Jake Evans

Saturday 13th September, 1.30pm-3.30pm Wem Town Hall

Stories and Crafts - Stories told by Jake Evans

Saturday 11th October, 1.30pm-3.30pm Wem Town Hall

Natter Matters -Abi from PACC-Community Navigator Service

Monday 13th October, 9.30am-11.30am
Meeting Room, Wem Town Hall

Natter Matters

Monday 10th November, 9.30am-11.30am Wem Town Hall

Swimming - Whitchurch Swimming Pool

Date TBC (November), Sunday 11am-12pm

Natter Matters

Monday 8th Decemeber, 9.30am-11.30am Wem Town Hall

Please book on to events via the Wem SEN Hub Facebook Page

**WEM TOWN HALL
SEN EVENTS AND ACTIVITIES**



Relaxed Screening of Hotel Transylvania

Tuesday 28th October, 1.30pm - Wem Town Hall

Wem Town Hall Halloween Crafts SEN Session

Friday 31st October 1pm-2pm

Relaxed Screening of Polar Express (PJs Welcome)

Saturday 20th December, 1.30pm, Wem Town Hall

please book for these events directly with Wem Town Hall

You can also find us at

Wem Market every Thursday until 9th October

Wem Car boot - Sunday 14th September
9.00am-12.00pm Wem Recreational Ground

Quiet Space during
Wem Christmas Lights and Festival
1pm-6pm, Wem Town Hall



**Events coming in the
New Year**

The Animal Family
and
Keystage Circus

Shropshire Supporting Families through Early Help

COFFEE & CHAT Wem

3rd Thursday of each month
1.30pm until 3pm
Wem Library, 3 High St, Wem,
Shrewsbury SY4 5AA

All families within the local area welcome

Free information, support & advice around:

- Family Life
- Housing & Finance
- Special Education Needs and/or Disabilities (SEND)
- Parenting Support
- Training & Employment
- Domestic Abuse Support
- And much more...

REFRESHMENTS WILL BE PROVIDED
"PLEASE BRING YOUR OWN SEALED CUP/TRAVEL MUG"

shropshire.gov.uk/early-help

Shropshire Council

Integrated Care System
Shropshire, Telford and Wrekin

NHS
Shropshire, Telford and Wrekin

Kiley, Alex, Chelsie, Jayne, Jasdeep, Karen

**Worried about your child's health?
Think 'Pharmacy First'**

You can now get treatment for a variety of common conditions and minor illnesses from your local community pharmacy.

Your pharmacy can help with:

- Earache (ages 1-17)
- Infected insect bites (from age 1)
- Impetigo (from age 1)
- Sore throat (from age 5)
- Hay fever (all ages)
- Conjunctivitis (all ages)

If you don't know whether a pharmacist can help with what you need, give them a call first or just pop in.

If you get a prescription through your pharmacy, you'll never pay more than if you had seen your GP.

Artificial Intelligence (AI)

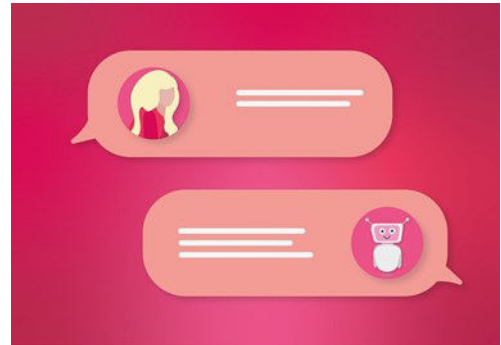
What is AI?

AI is when a computer/machine can learn and perform tasks like a human. Its popularity continues to grow, and examples include:

Search engines such as Google now include an AI-generated overview as part of their results.

Virtual assistants like Alexa, Meta AI and Siri.

Chatbots such as ChatGPT and My AI from Snapchat.



Opportunities

AI can be an effective tool when used correctly, for instance:

Homework – children can use AI to support and assist their learning.

Advice – AI can be used to provide information and suggestions on a variety of topics.

Risks and concerns

Misinformation – ensure your child understands that AI can sometimes provide incorrect or misleading information.

Privacy issues – read any privacy policies before using.

Chat apps - a simple search of “AI Chat” within the App store highlights the number of apps already available that are not suitable for children as many are rated as 17+.

Image manipulation – there are AI tools that can be used to digitally remove clothes from photos, which clearly raises serious safeguarding and privacy concerns.

Deepfakes – there are also AI tools that create realistic, fake videos that can be used to spread misinformation or cause harm.

How can I protect my child?

To help keep your child safe online, it is important to:

Check age ratings of any apps or websites that your child accesses.

Develop your child’s digital literacy by highlighting the risks of AI and showing them how important it is to verify what they see online.

Set up appropriate parental controls on their devices/ broadband.

Chat to your child regularly and ensure your child knows that they should talk to you or another trusted adult if anything concerns them.

Grooming online

Grooming is when somebody seeks to build a relationship with a child to exploit them or cause harm.

It is important that we teach our children how to recognise red flags. Childline have lots of useful information on their website, including where to get further support from:

<https://www.childline.org.uk/info-advice/bullying-abuse-safety/online-mobile-safety/online-grooming/>