



'Understanding your child with additional needs'

A new online course for parents.



This online course is for parents, relatives and friends of children who have a physical or learning disability, or may have autistic traits. In the UK, you may be within the SEND (Special Educational Needs and Disability) system. Some parents describe their child as differently abled, or neuroatypical.

It is equivalent to a:

10
SESSION
GROUP

A **BIG** course, with lots of relevant content.

This course is in two sections:

Level 1

Lays the foundation for understanding your child.

Level 2

Looks at some particular aspects of parenting: sleeping and anger management.

Once you've finished level 1 you can progress onto level 2 if you'd like.

A total of:

14
MODULES



15-20 mins each.

Some of what this course covers:

- How your child develops
- Understanding how your child is feeling
- Tuning into what your child needs
- Different styles of parenting
- Why is sleep important

Further details:

www.inourplace.co.uk | www.solihullapproachparenting.com | solihull.approach@heartofengland.nhs.uk



ONLINE course for residents of SHROPSHIRE
Register Online and gain FREE (prepaid) access*

*where eligible

Part of the Solihull Approach series
 14 Modules
 Available 24/7

Go to:
www.inourplace.co.uk
 and enter the 'access code'

DARWIN18

To return to the course(s), go to
www.inourplace.co.uk and sign in

For technical support contact
solihull.approach@heartofengland.nhs.uk
 or 0121 296 4448 Mon-Fri 9am-5pm



SolihullApproach
www.inourplace.co.uk

Understanding your child with additional needs

For everyone around the child:
 Mums, Dads, Grandparents,
 friends and relations

@SolihullApproach (NB: 1 'p')
www.solihullapproachparenting.com



ONLINE ANTENATAL course
FREE across Shropshire and Telford

Written by Registered Midwives
 & NHS professionals

Part of the Solihull Approach series
 9 Modules, lifetime access
 Available 24/7

Go to
www.inourplace.co.uk

Apply this 'Access Code' to
 get access for FREE

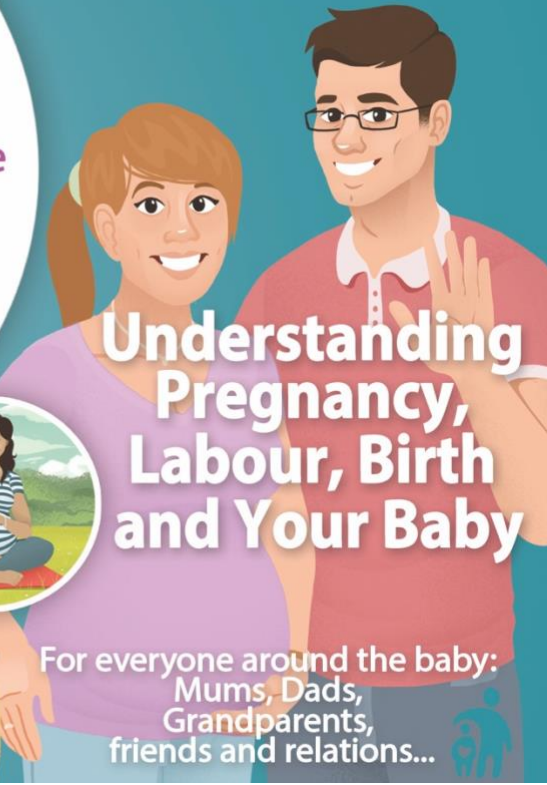
DARWIN18

For technical support contact
solihull.approach-parenting@heartofengland.nhs.uk
 or 0121 296 4448 Mon-Fri 9am-5pm



Understanding Pregnancy, Labour, Birth and Your Baby

For everyone around the baby:
 Mums, Dads,
 Grandparents,
 friends and relations...





Understanding Your Child

ONLINE course FOR PARENTS

FREE across Shropshire and Telford

Written by Psychologists, Psychotherapists, Health Visitors & NHS professionals

Part of the Solihull Approach series
11 Modules, lifetime access
Available 24/7



For everyone around the child:
Mums, Dads,
Grandparents,
friends and relations...

Go to
www.inourplace.co.uk

Apply this 'Access Code' to
get access for FREE

DARWIN18

For technical support contact
solihull.approach-parenting@heartofengland.nhs.uk
or 0121 296 4448 Mon-Fri 9am-5pm



ONLINE POSTNATAL course

FREE across Shropshire and Telford

Written by Psychologists, Psychotherapists, Health Visitors & NHS professionals

Part of the Solihull Approach series
9 Modules, lifetime access
Available 24/7



Understanding Your Baby

For everyone around the baby:
supporting you and
the new arrival

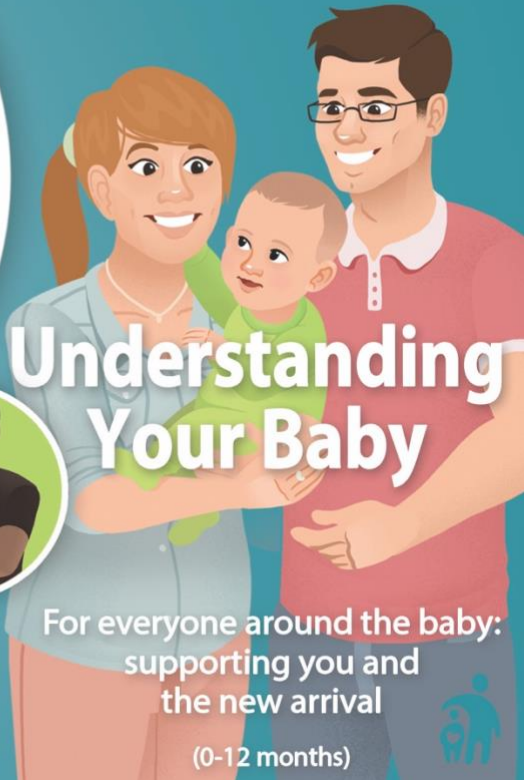
(0-12 months)

Go to
www.inourplace.co.uk

Apply this 'Access Code' to
get access for FREE

DARWIN18

For technical support contact
solihull.approach-parenting@heartofengland.nhs.uk
or 0121 296 4448 Mon-Fri 9am-5pm





UNDERSTANDING YOUR CHILD
SOLIHULL APPROACH

Online course for teenagers

'Understanding your brain (for teenagers only!)

- Have you noticed changes in your behaviour?
- Do you sleep more than you used to?
- Want to know why teenagers are more open-minded?



Your brain is changing!
Find out more!



For technical support contact:
solihull.approach@heartofengland.nhs.uk
or call 0121 296 4448 Mon-Fri, 9am-5pm

9 Modules



and

Visit: www.inourplace.co.uk

apply the code
Darwin18
to get free and
unlimited access